



State Road (SR) 9/I-95 Resurfacing, Restoration, and Rehabilitation (RRR) Project

From north of County Road (CR) 708/Bridge Road to the
Martin/St. Lucie County Line

Martin County, FL

Financial Project ID: 449159-1-52-01 and 449160-1-52-01

Virtual Public Meeting
Wednesday, May 28, 2025



Virtual Public Meeting Orientation

Moderator & Presenter



Samantha Kayser
Community Outreach Specialist
The Corradino Group

Meeting Format

Presentation, Q&A Session

- 5 p.m. to 5:30 p.m.
- 5:30 p.m. to 6 p.m.

The Florida Department of Transportation is required to comply with various non-discrimination laws and regulations, including **Title VI of the Civil Rights Act of 1964.**

Public participation is solicited without regard to race, color, national origin, age, sex, religion, disability, or family status.

Persons wishing to express concerns about Title VI may do so by contacting either:

District Four

Florida Department of Transportation
District Four Title VI Coordinator

Sharon Singh Hagyan



(954) 777-4190,



Sharon.SinghHagyan@dot.state.fl.us

Tallahassee Office

Florida Department of Transportation
Statewide Title VI Coordinator

Stefan Kulakowski



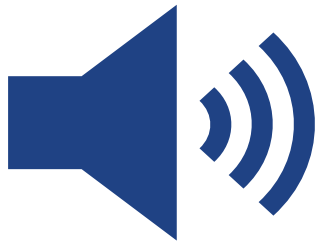
(850) 414-4742,



Stefan.Kulakowski@dot.state.fl.us

All inquiries or concerns will be handled according to FDOT procedure and in a prompt and courteous manner.

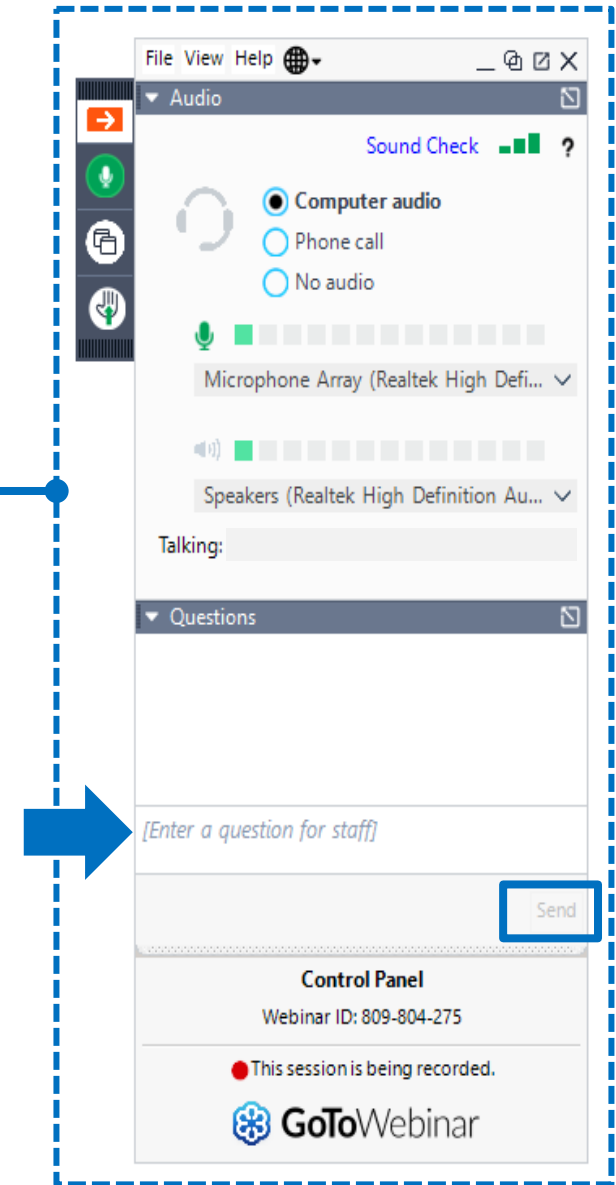
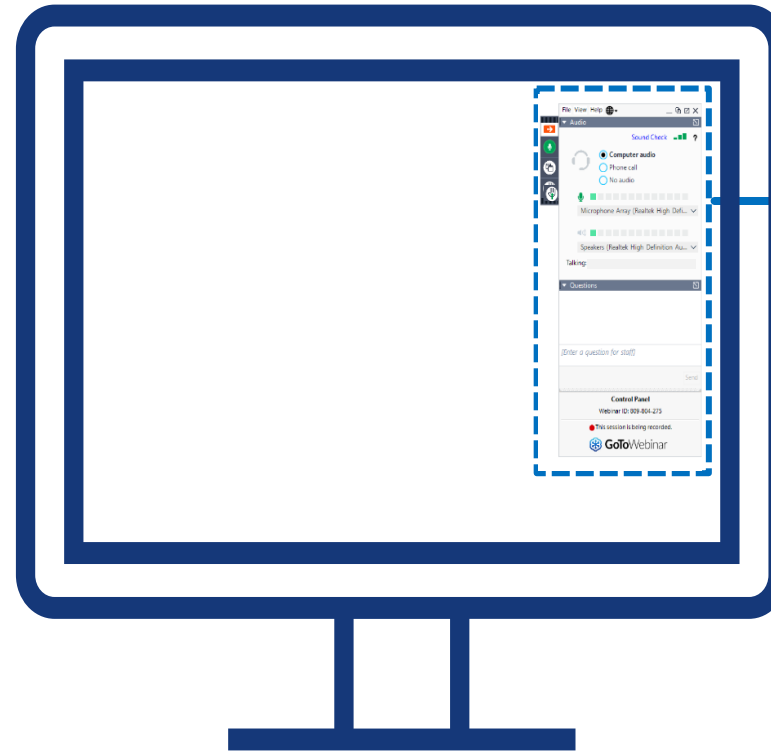
Virtual Public Meeting Orientation



- This Virtual Public Meeting is being recorded.
- All attendees **will remain muted** throughout the meeting.
- If you experience technical difficulties, please contact **GoTo Webinar Support at +1(833) 851-8340**.
- At the end of the presentation attendees are also welcome to submit any questions/comments using the GoTo Webinar Question Panel and a member of the team will respond during the question-and-answer portion. To request to speak, click the Raise Hand button on the Control Panel and unmute your microphone when your name is called.

Participating on GoTo Webinar

- If you would like to ask a question verbally, please click on the hand icon to be recognized.
- This meeting is being recorded and will be posted to www.d4fdot.com.



Meet the Team



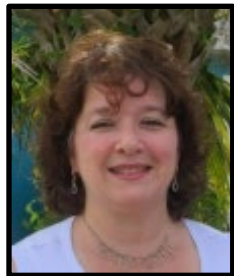
Mark Freeman

Construction Project Manager
FDOT District Four, Treasure Coast
Operations



Ronda Rupert, P.E.

Senior Project Engineer
Ally Engineering Services, Inc.



Wendy McLellan

Project Administrator
Ally Engineering Services, Inc.



Robert Lopes, P.E.

Design Project Manager
FDOT District Four



Jasmani Riveron, P.E.

Engineer of Record
Ardurra



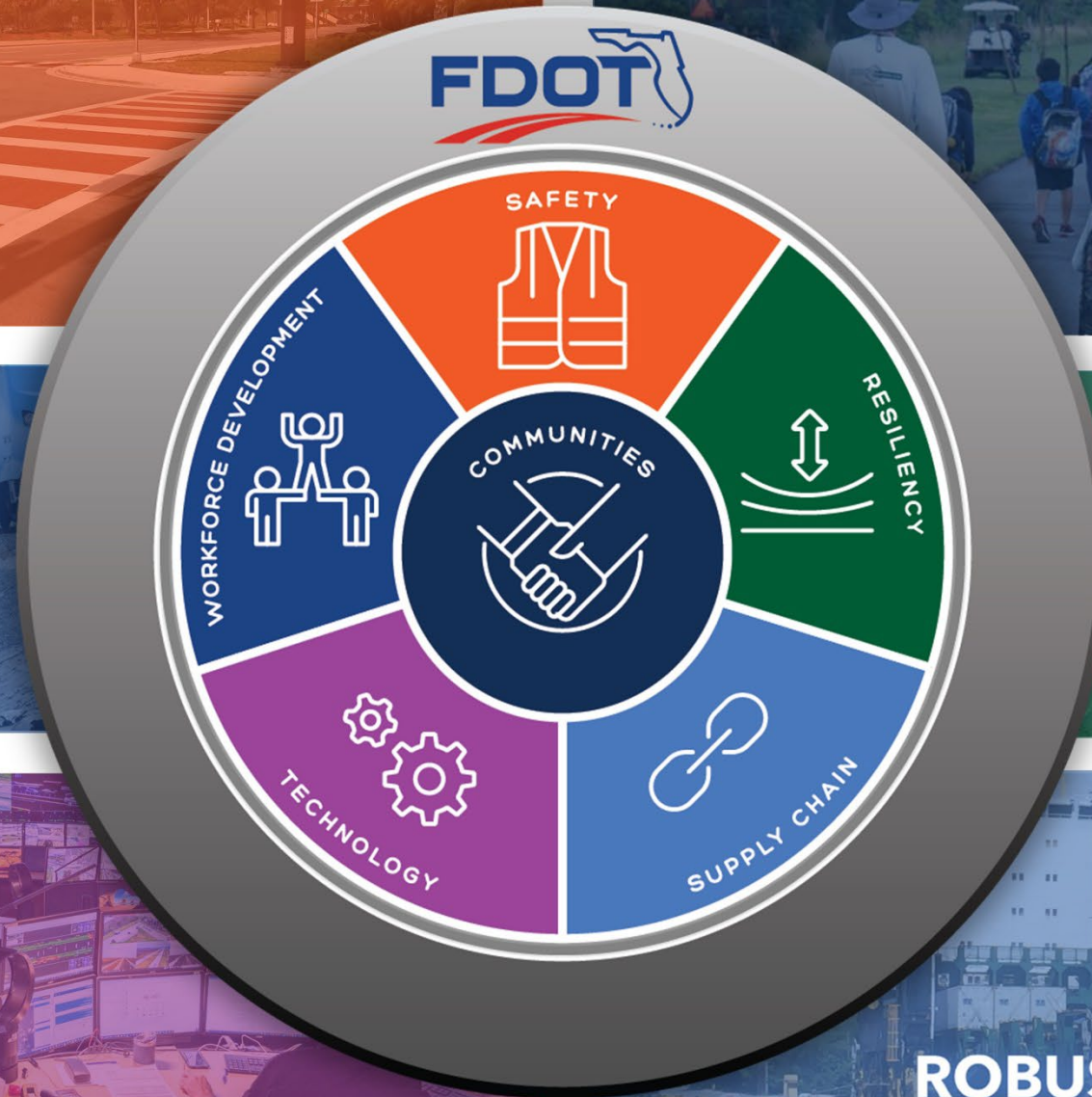
Candace Ercolano

Contractor
C.W. Roberts Contracting, Inc.



Brittany Bradley

Contractor
C.W. Roberts Contracting, Inc.



2055 Florida Transportation Plan



SINGLE, OVERARCHING **PLAN**



GUIDES FLORIDA'S TRANSPORTATION **FUTURE**



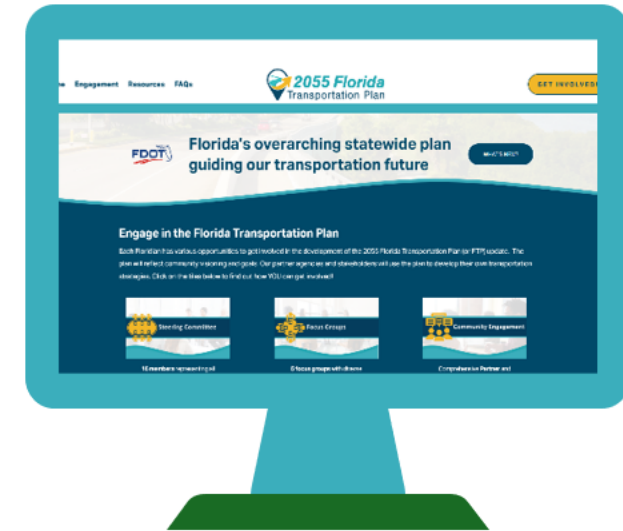
FOUNDATION FOR FLORIDA'S WORK PROGRAM



UPDATED EVERY **5 YEARS**



COLLABORATIVE EFFORT WITH **PUBLIC AND PRIVATE PARTNERS**



**Scan to
learn more!**



Get Engaged Today!

FloridaFTP.com

Project Limits



Project Overview

Purpose: To extend the pavement's service life through milling and resurfacing and enhance roadway safety while improving traffic operations along the SR 9/I-95 corridor for motorists.

Length: 17.002 miles

Contractor: C.W. Roberts Contracting, Inc.

Construction Start: June 2025

Cost: \$40.8 Million

Estimated Completion: Fall 2028



Southbound SR 9/I-95 at
SR 714/Martin Highway
(Pre-Construction)

Scope of Work

Roadway Improvements

Roadway Improvements

- Milling and resurfacing the SR 9/I-95 mainline from north of CR 708/Bridge Road to the Martin/St. Lucie County line to enhance safety and long-term resiliency
- Widening the northbound SR 9/I-95 entrance ramp shoulder from SR 76/Kanner Highway to improve safety and traffic operations



Northbound SR 9/I-95
(Pre-Construction)

Scope of Work

Safety Improvements

Safety Improvements

- Constructing new lighting to increase nighttime visibility
- Installing Wrong Way Vehicle Detection System (WWVDS) on SR 76/Kanner Highway, SR 714/Martin Highway, and CR 713/High Meadow Avenue ramps to improve safety
- Upgrading signage and pavement markings to enhance safety, functionality, and traffic operations

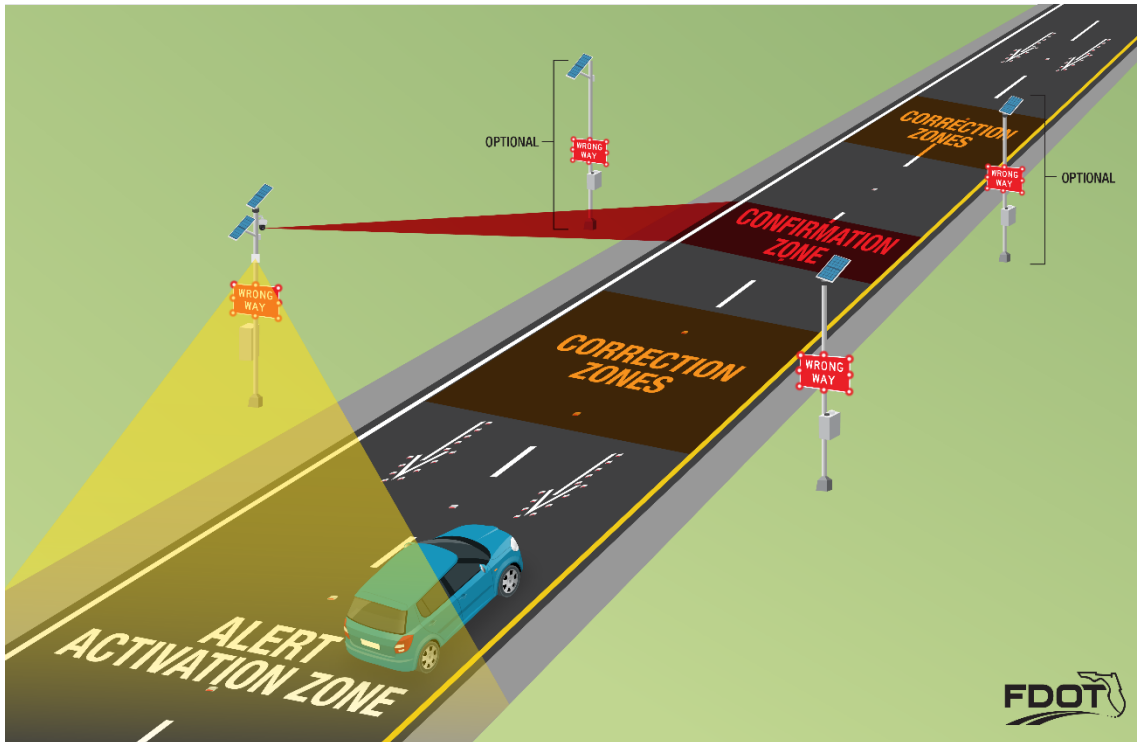


Northbound SR 9/I-95 exit ramp to
SR 714/Martin highway
(Pre-Construction)

Safety Improvements

Wrong Way Vehicle Detection System (WWVDS)

The WWVDS will be installed on the SR 76/Kanner Highway, SR 714/Martin Highway, and CR 713/High Meadow Avenue ramps.



The system detects vehicles entering SR 9/I-95 in the wrong direction.



Wrong way driver will trigger flashing lights on the sign border and alerts FDOT and law enforcement officials.

Maintenance of Traffic:

Lane and interchange ramp closures on SR 9/I-95 are permitted nightly, Sunday through Thursday as follows:

- From north of CR 708/Bridge Road to south of SR 76/Kanner Highway:
 - Single lane and double lane closures on northbound SR 9/I-95, from 8:00 p.m. to 6:00 a.m.
- From south of SR 76/Kanner Highway to the Martin/St. Lucie County Line:
 - Single and double lane closures on northbound SR 9/I-95, from 9:00 p.m. to 7:00 a.m.
 - Single and double lane closures on southbound SR 9/I-95, from 7:30 p.m. to 5:30 a.m.

Maintenance of Traffic:

- SR 9/I-95 ramp impacts:
 - Single lane and full ramp closures are permitted throughout the project limits, from 8:00 p.m. to 6:00 a.m. Consecutive ramp closures will not take place at the same time.



SR 9/I-95 northbound entrance ramp from
CR 708/Bridge Road
(Pre-Construction)

Northbound SR 9/I-95 Exit Ramp to SR 76/Kanner Highway Detour

The northbound SR 9/I-95 exit ramp to SR 76/Kanner Highway will be intermittently closed nightly, Sunday through Thursday, from 8:00 p.m. to 6:00 a.m., for milling and repaving work.

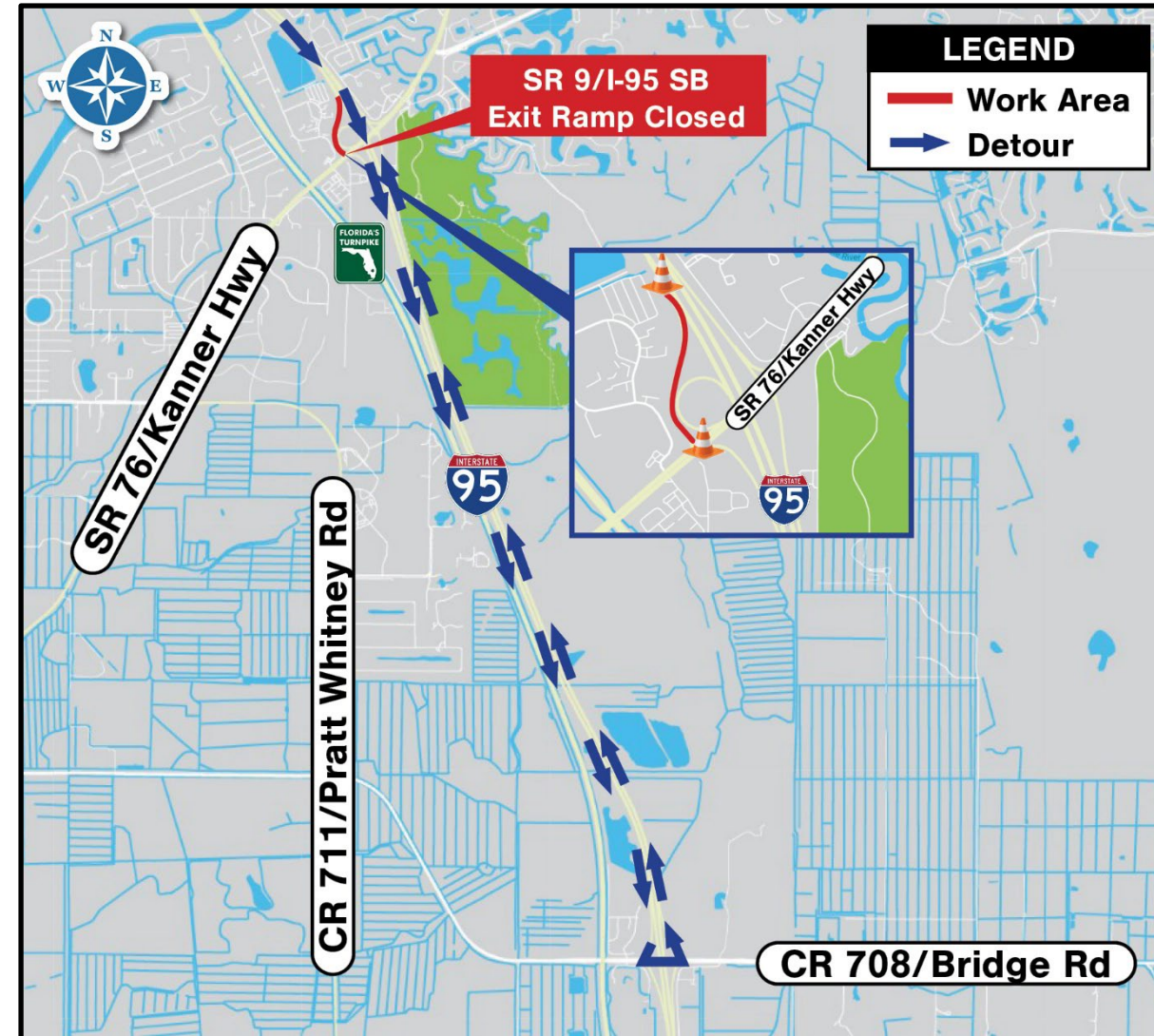
- Motorists will be detoured via northbound SR 9/I-95 to the CR 713/High Meadow Avenue exit ramp to northbound CR 713/High Meadow Avenue to eastbound SR 714/Martin Highway to SR 76/Kanner Highway



Southbound SR 9/I-95 Exit Ramp to SR 76/Kanner Highway Detour

The southbound SR 9/I-95 exit ramp to SR 76/Kanner Highway will be intermittently closed nightly, Sunday through Thursday, from 8:00 p.m. to 6:00 a.m., for milling and repaving work.

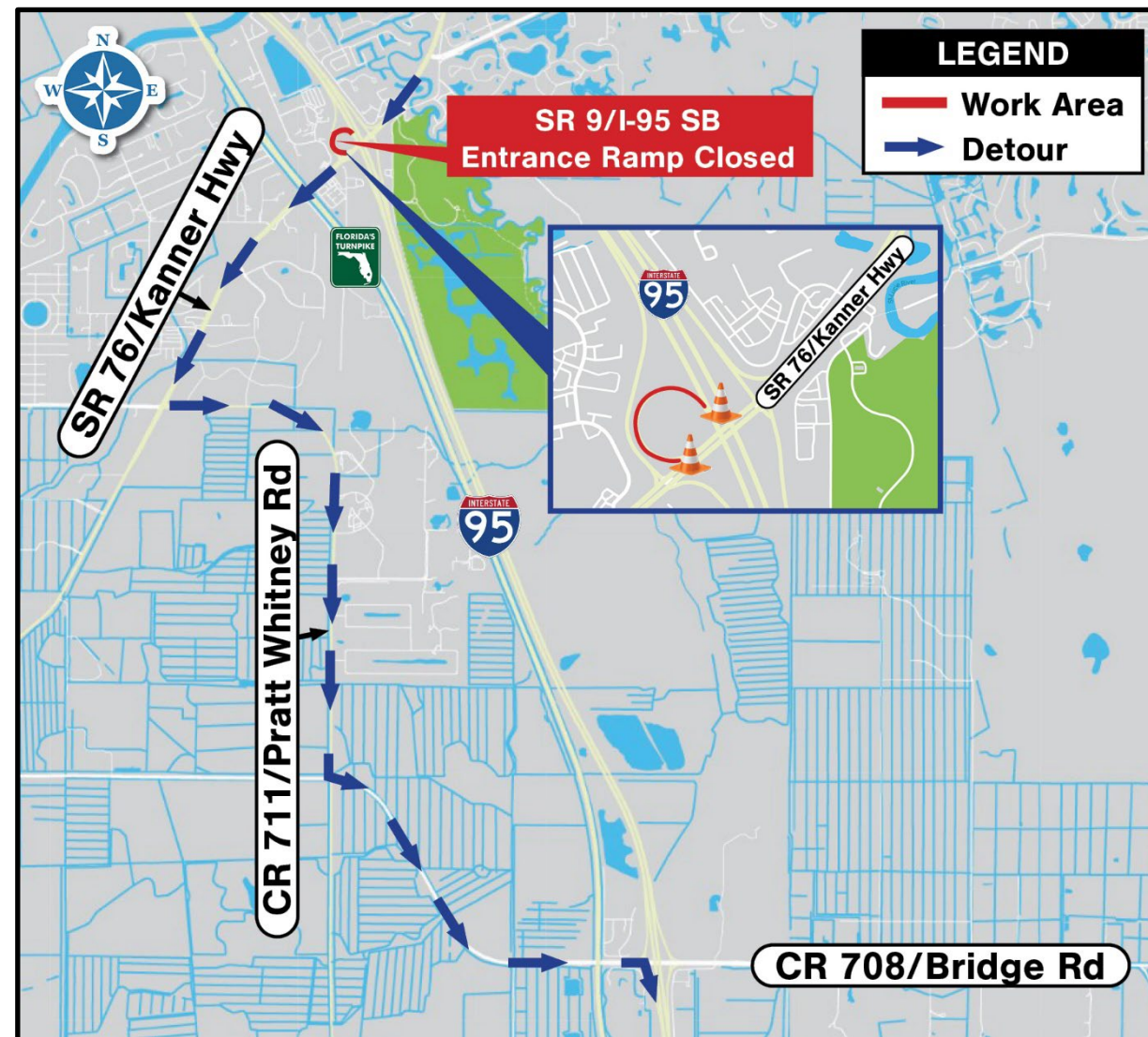
- Motorists will be detoured via southbound SR 9/I-95 to the CR 708/Bridge Road exit ramp to eastbound CR 708/Bridge Road to the northbound SR 9/I-95 entrance ramp to the SR 76/Kanner Highway exit ramp



Southbound SR 9/I-95 Entrance Ramp from SR 76/Kanner Highway Detour 1

The southbound SR 9/I-95 entrance ramp from SR 76/Kanner Highway will be intermittently closed nightly, Sunday through Thursday, from 8:00 p.m. to 6:00 a.m., for milling and repaving work.

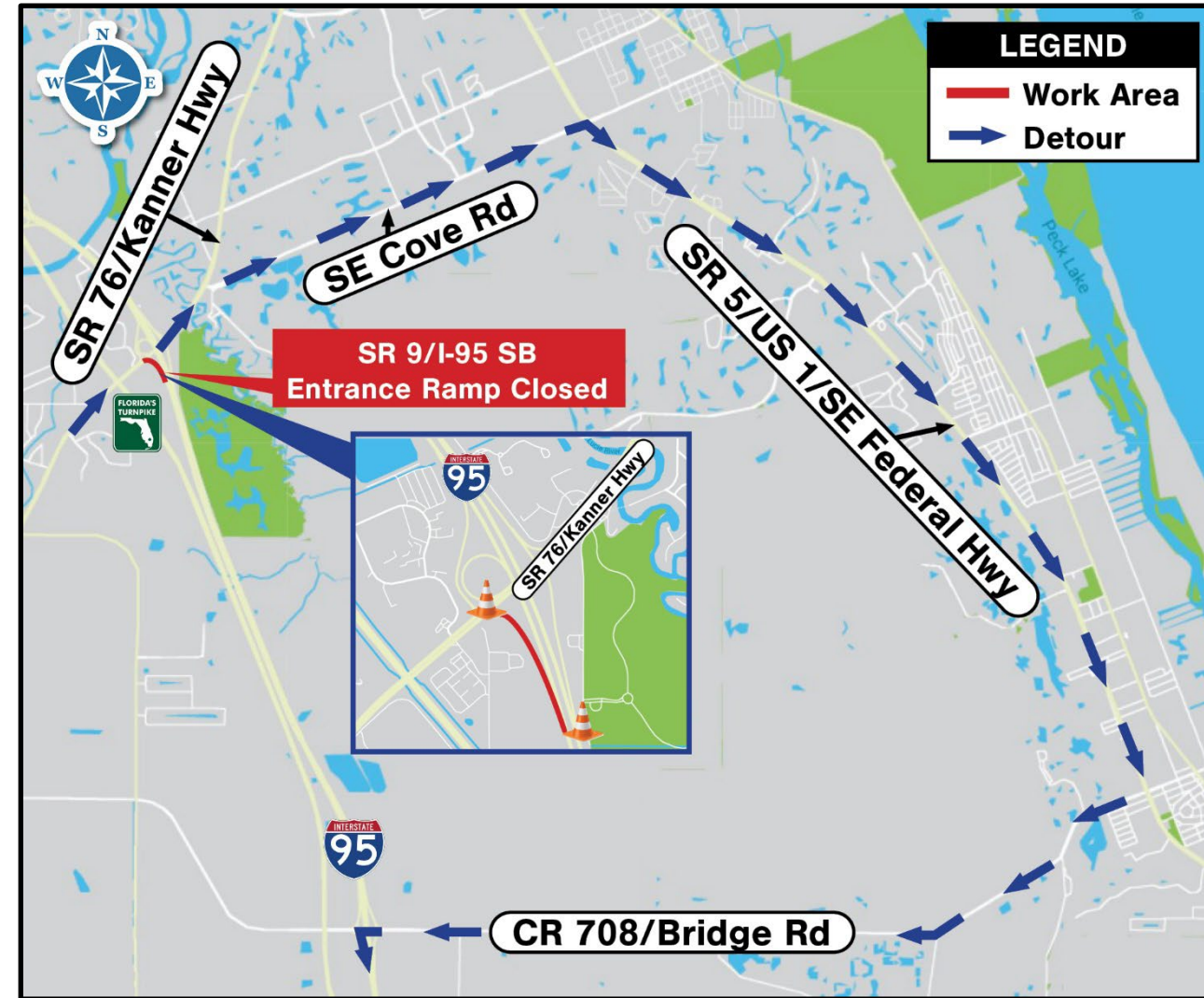
- Motorists will be detoured via westbound SR 76/Kanner Highway to southbound CR 711/Pratt Whitney Road to eastbound CR 708/Bridge Road to southbound SR 9/I-95 entrance ramp



Southbound SR 9/I-95 Entrance Ramp from SR 76/Kanner Highway Detour 2

The southbound SR 9/I-95 entrance ramp from SR 76/Kanner Highway will be intermittently closed nightly, Sunday through Thursday, from 8:00 p.m. to 6:00 a.m., for milling and repaving work.

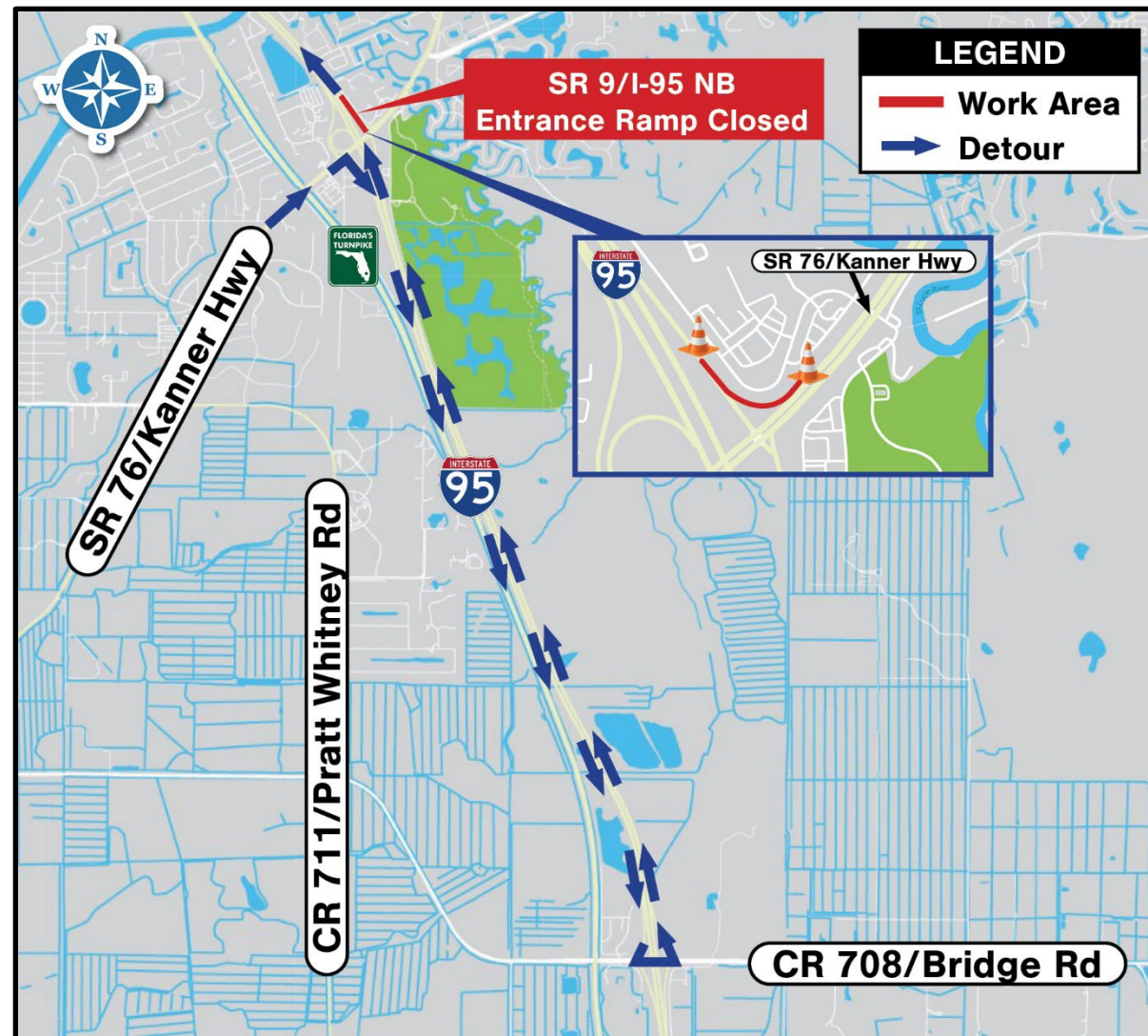
- Motorists will be detoured via eastbound SR 76/Kanner Highway to southbound SR 5/US 1 to westbound CR 708/Bridge Road to the southbound SR 9/I-95 entrance ramp



Northbound SR 9/I-95 Entrance Ramp from SR 76/Kanner Highway Detour

The northbound SR 9/I-95 entrance ramp from SR 76/Kanner Highway will be intermittently closed nightly, Sunday through Thursday, from 8:00 p.m. to 6:00 a.m., for milling and repaving work.

- Motorists will be detoured via the SR 9/I-95 southbound entrance ramp from SR 76/Kanner Highway to the CR 708/Bridge Road exit ramp to eastbound CR 708/Bridge Road to the northbound SR 9/I-95 entrance ramp



Construction Phases

Phase 1:

- Remove the existing median double-faced guardrail and construct a new double-faced guardrail along northbound SR 9/I-95 just south of the SR 76/Kanner Highway entrance ramp
- Construct the new guardrail along the northbound SR 9/I-95 entrance ramp from SR 76/Kanner Highway and the approach to the bridge over SR 714/Martin Highway
- Mill and resurface SR 9/I-95 throughout the project limits
- Construct the new shoulder at the northbound SR 9/I-95 entrance ramp from SR 76/Kanner Highway

Construction Phases

Phase 1:

- Implement interchange ramp detours to mill and resurface the roadway
- Place painted pavement markings throughout the project limits
- Construct signing, lighting, and Intelligent Transportation Systems (ITS) improvements



Southbound SR 9/I-95 just north of
CR 708/Bridge Road
(Pre-Construction)

Construction Phases

Phase 2:

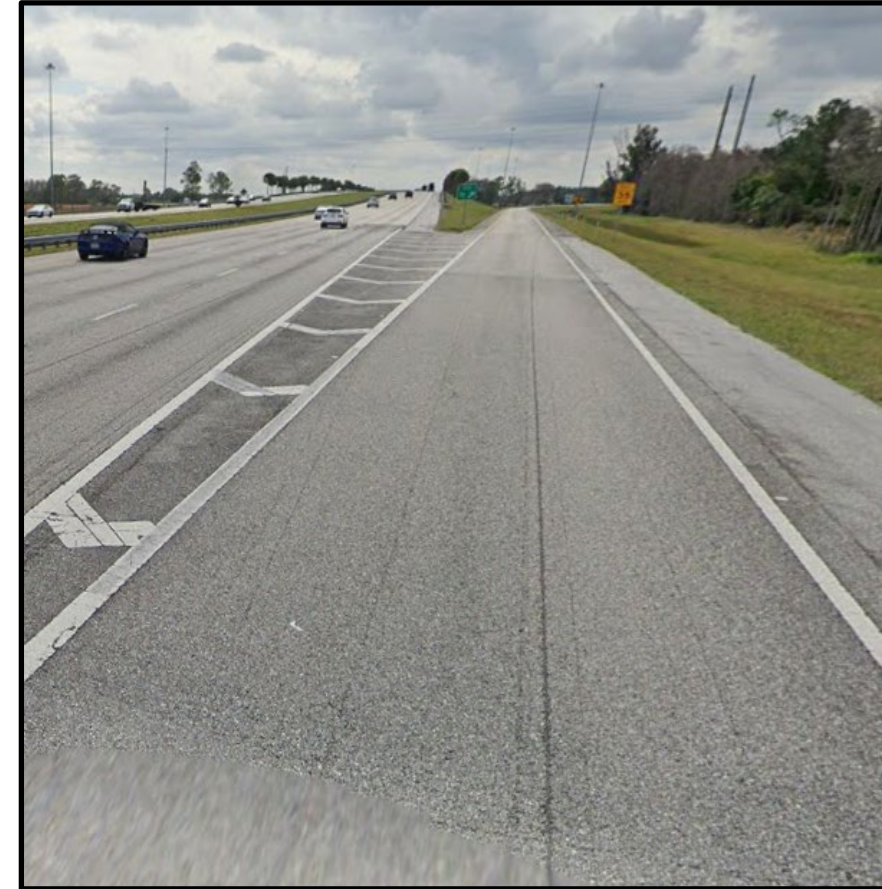
- Mill and resurface SR 9/I-95 throughout the project limits
- Place painted pavement markings
- Construct signing, lighting, and drainage improvements
- Install Wrong Way Vehicle Detection Systems (WWVDS) on SR 76/Kanner Highway, SR 714/Martin Highway, and CR 713/High Meadow Avenue ramps



Northbound SR 9/I-95 just north of
CR 713/High Meadow Avenue
(Pre-Construction)

Phase 3:

- Replace the outside guardrail at the approaches to the existing canal bridge
- Mill and resurface SR 9/I-95 throughout the project limits
- Place painted pavement markings
- Implement the northbound SR 9/I-95 entrance ramp from CR 708/Bridge Road and the southbound SR 9/I-95 exit ramp to CR 708/Bridge Road detours to mill and resurface the ramps



Southbound SR 9/I-95 exit ramp
to CR 708/Bridge Road
(Pre-Construction)

Construction Phases

Phase 4:

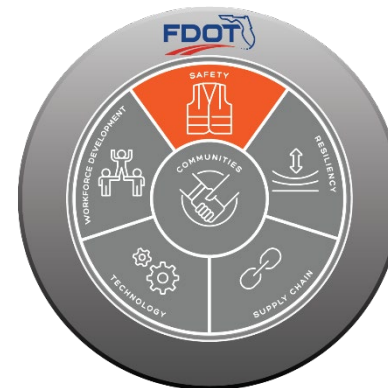
- Place friction course asphalt throughout the project limits
- Install the ground-in rumble strips
- Place thermoplastic pavement markings



Northbound SR 9/I-95 at CR 713/High Meadow Avenue
(Pre-Construction)

Safety and Local Coordination

- **Public Safety is our Top Priority!**
 - **Work Zone Signage & Maintenance of Traffic**
 - Advanced warning and project signage will be placed throughout the construction corridor to alert the traveling public
 - **Local Agency & Stakeholder Coordination**
 - The project team will continue working closely with local stakeholders including local municipalities, schools, neighborhoods and other local agencies to ensure safety standards are met and impacts to the public are minimized in any way possible
 - **Emergency vehicles will be provided access at all times**



Lighted Message Board

Community Outreach

- To receive project specific updates please email skayser@corradino.com to be added to the distribution list
- A weekly press release will be distributed every Friday
- Additional project specific information can be found on the website

****All project updates will be posted to the District Four website.****

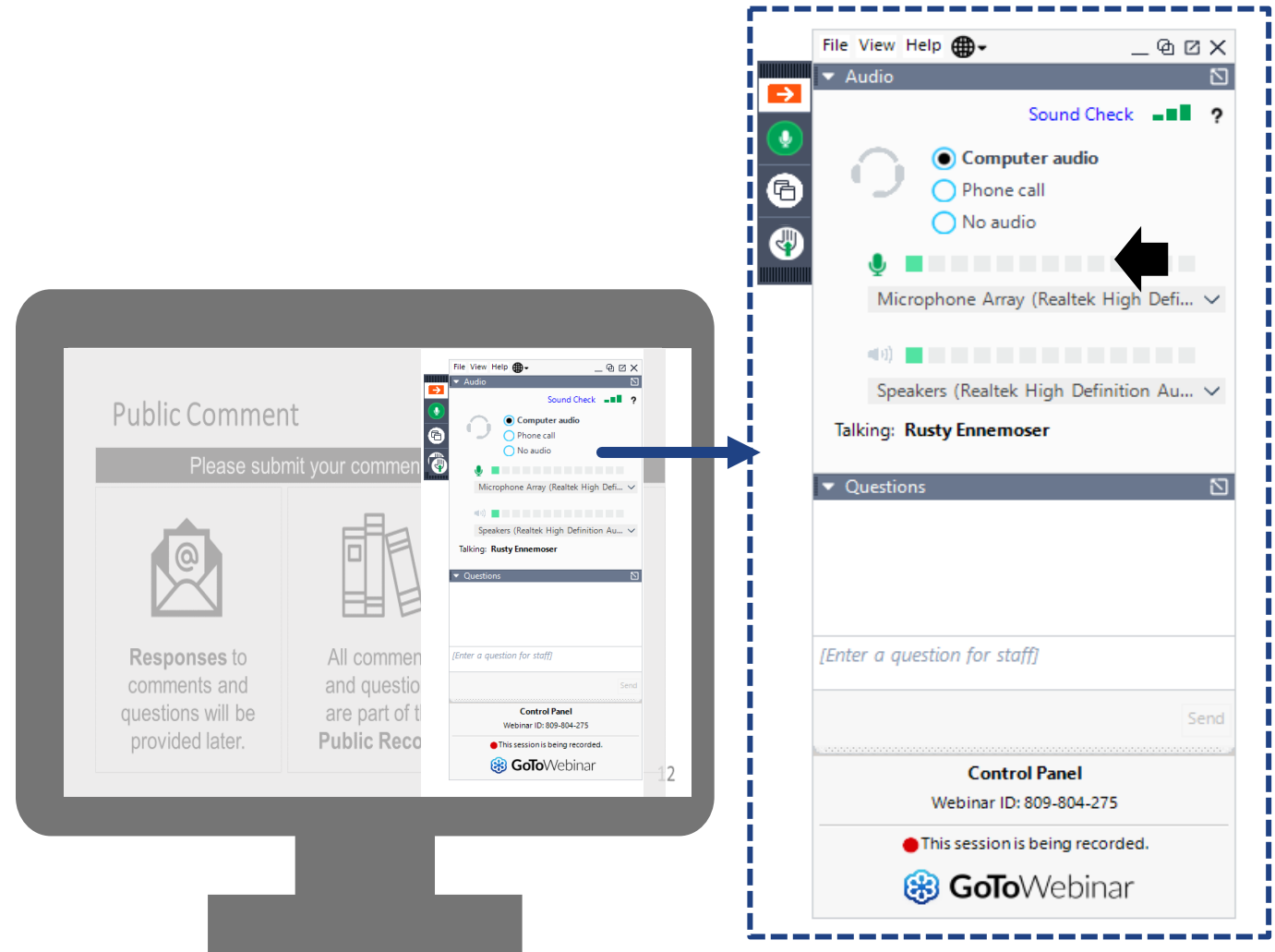


Scan this QR code to go to the District Four Website.

www.d4fdot.com

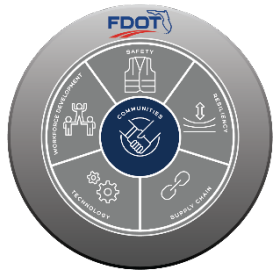
Questions and Answers

- Attendees are welcome to submit questions/comments using the GoToWebinar Question Panel



Contact Us

Throughout the project, questions or comments can be submitted via email or phone.



Samantha Kayser
Community Outreach Specialist



skayser@corradino.com



(772) 579-5479

Wendy McLellan
Project Administrator



wmclellan@allyeng.com



(561) 373-0787

Mark Freeman
Construction Project Manager



mark.freeman@dot.state.fl.us



(772) 429-4904

***This PowerPoint
presentation has been
uploaded to GoTo Webinar
for download.***

FDOT Safety Message

You say you'd
never forget them,
but never happens.



Prevent Hot
Car Deaths

STOP. LOOK. LOCK.





**Thank you for attending today's
Virtual Public Meeting!**